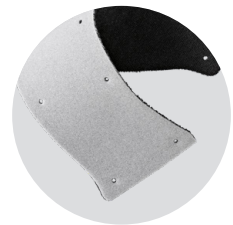




WORKARMA

SWEAT BAND HARD HAT



FEATURES

- Replaceable comfort cotton, foam backed sweatband
- Designed for moisture absorption, hygiene and comfort
- Easily hooks onto to hard hat harness

AVAILABLE RANGE

PART NUMBER	COLOUR	PACK QTY
HABOCS0P002	Black	5



WORKARMA

SWEAT BAND HARD HAT Head Protection

UNDERSTANDING HEAD PROTECTION

Head Protection is broken into 4 main categories to determine the hard hats ability to protect the wearer from Impact and /or high heat. Hard hats generally worn in Australia and NZ are tested in accordance with AS/NZS 1801:1997, with the exception of the Bump cap, which is tested against EN 812, as demonstrated below:

TYPE	CATEGORY	DESCRIPTION
Bump	Bump Cap – EN812-2012	Suitable for use in Warehouse where protection from bumps and scrapes are required
Type 1	General industrial	Suitable for work in the construction industry, factories, and quarrying
Type 2	High Temperature workplaces	Intended to withstand exposure to high temperatures like those encountered in Steelworks
Type 3	Bush Fire fighting	Intended to be worn for those involved in Bush Firefighting

The above information should be used in conjunction with the wearers own risk assessment, adequate knowledge of AS/NZS standards.

APPLICATIONS

Including but not limited to industries such as:

- Construction
- Landscaping
- Manufacturing
- Civil works
- Heavy and light engineering



Bremick Pty Ltd

Head Office | 88 Dalmeny Avenue, Rosebery 2018
National Distribution Centre | M5/M7 Logistics Park,
Warehouse 4B, 290 Kurrajong Road, Prestons NSW 2170

www.workarma.com.au

www.bremick.com.au