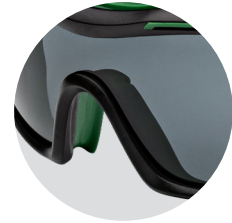




WORKARMA

SUMMIT SMOKE

SAFETY GLASSES



Australian Standard
AS/NZS 1337.1:2010
Lic.SMK40226
SAI Global



Anti-Fog



99.9% UV Protection



Anti-Scratch

LENS OPTIONS



Clear



Smoke



Brown

FEATURES

- Certified Medium Impact rated to AS/NZS 1337.1 : 2010 Personal Eye Protection
- SMOKE lens rated I 3 = Medium Impact - Outdoor use, Tinted
- Also available in Clear and Brown
- Premium Anti-Fog coating
- Hard coated polycarbonate lens for Anti-Scratch protection
- 99.9% UV protection
- Wrap around 8 base curve lens, providing front and side protection
- Black premium TPR frame and co-moulded flexible side arms providing added comfort
- Side arm ratchet adjustment for a perfect fit

- Co-moulded TPR dust seal for protection against dust and minor splash
- Weight 35g

AVAILABLE RANGE

PART NUMBER	LENS	PACK QTY	CARTON QTY
ESMS1KBCAG2	Clear	1 Pair	12 Pairs
ESMS1KGSAG2	Smoke	1 Pair	12 Pairs
ESMS1KR BAG2	Brown	1 Pair	12 Pairs

WORKARMA



SUMMIT SMOKE SAFETY GLASSES Eye Protection

TEST AND CERTIFICATION

Certified to AS/NZS 1337.1:2010 Personal Eye Protection Part 1: Eye and Face Protectors for Occupational Applications.

Certified by SAI Global



Australian Standard
AS/NZS 1337.1:2010
Lic. SMK40226
SAI Global

UNDERSTANDING EYE AND FACE PROTECTION

Eye and Face protection is broken into 4 Impact Ratings; Low Impact, Medium Impact, High Impact, Extra High Impact. This is determined by the ability to provide adequate protection from a specified ball bearing without cracking, detaching, dislodging, breaking the device or coming into contact with the tested area (Eye or Face).

Eye and Face protection is also designed to protect the wearer from liquids, dust, gas, UV and glare. To understand the level of protection offered by the applicable protector, it is important to check the markings on the lens or frame.

LENS MARKING AS/NZS 1337.1:2010	DESCRIPTION	PROTECTION	APPLICABLE PROTECTOR
S	Low Impact: Resists a 6mm ball at 13m/s	Impact	Mesh safety glasses, mesh visor
I or F	Medium Impact: Resists a 6mm ball at 45m/s	Impact	Safety glasses, goggles, visors
V or B	High Impact: Resists a 6mm ball at 120m/s	Impact	Visors
A	Extra High Impact: Resists a 6mm ball at 190m/s	Impact	Visors
C or 3	Splash proof	Liquids	Goggles, visors
D or 4	Dust proof	Dust	Goggles
G or 5	Gas tight	Gas	Goggles
0	Outdoor use, untinted	Ocular	Safety glasses, goggles, visors
1, 2 or 3	Outdoor use, tinted	Ocular	Safety glasses, goggles, visors

The ocular protection levels are further explained below:

TRANSMISSION OF SUN GLARE SELECTION CHART

OCULAR CATEGORY/ NUMBER	VISIBLE LIGHT TRANSMISSION RANGE (FROM)	VISIBLE LIGHT TRANSMISSION RANGE (TO)
0	80%	100%
1	43%	80%
2	18%	43%
3	8%	18%

The above information should be used in conjunction with the wearers own risk assessment and adequate knowledge of AS/NZS standards.



WORKARMA

SUMMIT SMOKE SAFETY GLASSES Eye Protection

APPLICATIONS

Including but not limited to industries such as:

- Mining and construction
- Laboratory
- Trades
- Manufacturing

WARNINGS AND LIMITATIONS OF USE

- Wearer must complete a risk assessment to determine suitable protection required
- Risk assessment must determine if the eyewear is suitable for known application and or risk
- Inspect and replace eyewear if signs of scratches, cracks or imperfections are visual or an impact has occurred

STORAGE, SHELF LIFE AND CLEANING

- Store in a dry and clean environment
- Clean with a mild soap solution. Do not use solvents or an alcohol based solution as these may affect the lens coating

WORKARMA

Bremick Pty Ltd

Head Office | 88 Dalmeny Avenue, Rosebery 2018
National Distribution Centre | M5/M7 Logistics Park,
Warehouse 4B, 290 Kurrajong Road, Prestons NSW 2170

www.workarma.com.au

www.bremick.com.au