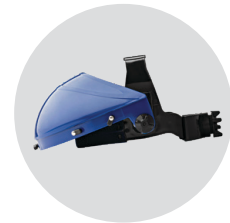
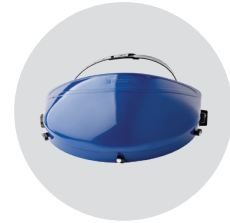




WORKARMA

FACESHIELD BROWGUARD



Australian Standard
AS/NZS 1337.1:2010
Lic.SMK40935
SAI Global

FEATURES

- Certified High Impact rated to AS/NZS 1337.1:2010: Personal Eye Protection (when used in conjunction with a Workarma visor)
- Adjustable browguard expands from 52cm to 62cm for a perfect fit
- Locking clips for easy visor replacement
- Adjustable ratchet harness
- Fitted with a replaceable cotton sweat band

AVAILABLE RANGE

PART NUMBER	PACK QTY
EBH00B00002	1

WORKARMA



FACESHIELD BROWGUARD Face Protection

TEST AND CERTIFICATION

Certified to AS/NZS 1337.1:2010 Personal Eye Protection Part 1: Eye and Face Protectors for Occupational Applications.

Certified by SAI Global



Australian Standard
AS/NZS 1337.1:2010
Lic.SMK40935
SAI Global

UNDERSTANDING EYE AND FACE PROTECTION

Eye and Face protection is broken into 4 Impact Ratings; Low Impact, Medium Impact, High Impact, Extra High Impact. This is determined by the ability to provide adequate protection from a specified ball bearing without cracking, detaching, dislodging, breaking the device or coming into contact with the tested area (Eye or Face).

Eye and Face protection is also designed to protect the wearer from liquids, dust, gas, UV and glare. To understand the level of protection offered by the applicable protector, it is important to check the markings on the lens or frame.

LENS MARKING AS/NZS 1337.1:2010	DESCRIPTION	PROTECTION	APPLICABLE PROTECTOR
S	Low Impact: Resists a 6mm ball at 13m/s	Impact	Mesh safety glasses, mesh visor
I or F	Medium Impact: Resists a 6mm ball at 45m/s	Impact	Safety glasses, goggles, visors
V or B	High Impact: Resists a 6mm ball at 120m/s	Impact	Visors
A	Extra High Impact: Resists a 6mm ball at 190m/s	Impact	Visors
C or 3	Splash proof	Liquids	Goggles, visors
D or 4	Dust proof	Dust	Goggles
G or 5	Gas tight	Gas	Goggles
0	Outdoor use, untinted	Ocular	Safety glasses, goggles, visors
1, 2 or 3	Outdoor use, tinted	Ocular	Safety glasses, goggles, visors

The ocular protection levels are further explained below:

TRANSMISSION OF SUN GLARE SELECTION CHART

OCULAR CATEGORY/ NUMBER	VISIBLE LIGHT TRANSMISSION RANGE (FROM)	VISIBLE LIGHT TRANSMISSION RANGE (TO)
0	80%	100%
1	43%	80%
2	18%	43%
3	8%	18%

The above information should be used in conjunction with the wearers own risk assessment and adequate knowledge of AS/NZS standards.

WORKARMA



FACESHIELD BROWGUARD Face Protection

APPLICATIONS

Including but not limited to industries such as:

- Grinding
- Woodworking
- Manufacturing
- Maintenance

WARNINGS AND LIMITATIONS OF USE

- Wearer must complete a risk assessment to determine suitable protection required
- Risk assessment must determine if the eyewear is suitable for known application and or risk
- Inspect and replace eyewear if signs of scratches, cracks or imperfections are visual or an impact has occurred

STORAGE, SHELF LIFE AND CLEANING

- Store in a dry and clean environment
- Clean with a mild soap solution. Do not use solvents or an alcohol based solution as these may affect the lens coating

WORKARMA

Bremick Pty Ltd

Head Office | 88 Dalmeny Avenue, Rosebery 2018
National Distribution Centre | M5/M7 Logistics Park,
Warehouse 4B, 290 Kurrajong Road, Prestons NSW 2170

www.workarma.com.au

www.bremick.com.au